

Lydstep Terrace

SOUTHVILLE

APPROXIMATE FLOOR AREA
110 SQM / 1184 SQFT



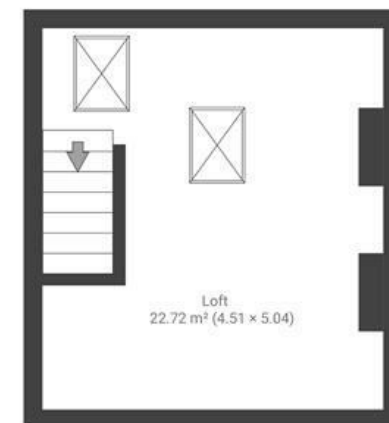
GROUND FLOOR



FIRST FLOOR



SECOND FLOOR



Boardwalk

Lydstep Terrace

SOUTHVILLE, BRISTOL

£

£535,000



BS3 1DR

zzz

2 Bedrooms



0 Bathrooms

"This home has been our dream 'nesting home'; our daughter's first home! The location is ideal for young families as there's so many baby classes in walking distance. The decking gets sunshine until the afternoon so we've loved having morning coffees and lunch breaks in the garden. One of our favourite things is that the front bedroom's window doesn't face another house—we could watch the New Year's Eve fireworks from bed! Being in a cul-de-sac also means we rarely have parking issues."

